

DATE OF ISSUE	21.05.21
DRAWING PACKAGE VERSION	1

GENERAL

S2711-G1	SITE SPECIFICATIONS	A
S2711-G2	OVERALL SITE PLAN	A
S2711-G3	SITE LAYOUT AND SETOUT PLAN	A
S2711-G4	SITE ELEVATION	A
S2711-G5	LANDSCAPING PLAN	A

ANTENNAS & TRANSMISSION

S2711-A1	OPTUS ANTENNA SYSTEM CONFIGURATION	A
S2711-A2	OPTUS RF PLUMBING DIAGRAM	A

STRUCTURAL

S2711-S1	OTC STEEL PLATFORM FOUNDATION DETAILS	A
S2711-S2	OTC STEEL PLATFORM SETOUT PLAN	A
S2711-S3	OTC STEEL PLATFORM DETAILS SHEET 1 OF 2	A
S2711-S4	OTC STEEL PLATFORM DETAILS SHEET 2 OF 2	A
S2711-S5	METER BOX H-FRAME DETAILS	A

ELECTRICAL

S2711-E1	ELECTRICAL SPECIFICATIONS & DESIGN LAYOUT	A
S2711-E2	SINGLE LINE DIAGRAM	A
S2711-E3	SITE EARTHING PLAN	A

OUTDOOR UNITS

S2711-F1	EQUIPMENT OTC LAYOUT PLAN	A
----------	---------------------------	---

EME EXCLUSION ZONES

--	--	--

LEASE / LICENCE

--	--	--

DISTRIBUTION

LEND LEASE	ALI SYED S	1
OPTUS	FABIO NERAL	1

OPTUS

OPTUS SITE - S2711 CURL CURL BEACH

LOT 7356 DP 1167221

ABBOTT ROAD SPORTSGROUND

NORTH CURL CURL, NSW 2096

STAY ALIVE SITE REPLACEMENT 5G

OPTUS WORK AUTHORITY N° 492163



Telecommunications Services
 Level 3, Zenith Tower B 821 Pacific Hwy,
 Chatswood NSW 2067 Australia
www.lendlease.com

FOR CONSTRUCTION

Drawing No. **S2711 - 00**

DATE OF ISSUE

21.05.21

DRAWING PACKAGE VERSION

1

REFERENCE DOCUMENTS

OSD-020	OPTUS EARTHING SPECIFICATIONS	12
OSD-100	STANDARD CONSTRUCTION NOTES	B
OSD-140	SITE BOUNDARY FENCE & GATE DETAILS	B
OSD-170	SITE SIGNAGE TYPICAL GROUND SITE	B
OSD-190	SIGNAGE FIXING DETAILS FOR LATTICE TOWERS	A
OSD-191	OPTUS EME SAFETY SIGNAGE REQUIREMENTS	A
OSD-340	PARABOLIC ANTENNA STRAP MOUNTS ON MONOPOLES	A
OSD-350	1200-2400 PARABOLIC ANTENNA MOUNTS ON MONOPOLES	B
OSD-500	ELEVATED CABLE LADDER SETOUT DETAILS FOR GROUND SITES	D
OSD-510	ELEVATED CABLE LADDER SUPPORT DETAILS SHEET 1	A
OSD-520	ELEVATED CABLE LADDER SUPPORT DETAILS SHEET 2	B
OSD-550	CABLE LAD RISER DETAILS FOR SHELTERS	A
OSD-570	UNDERGROUND CONDUIT AND CABLE DRAWING PIT LAYOUT & DETAILS	A
OSD-710	TYPICAL MONOPOLE GROUND SITE EARTHING PLAN	B
OSD-711	SITE EARTHING DETAILS FOR CONCRETE MONOPOLE	A
OSD-740	TYPICAL UTILITY POLE GROUND SITE EARTHING PLANS	B
OSD-750	TYPICAL GROUND SITE EARTHING DETAILS SHEET 1	B
OSD-760	TYPICAL GROUND SITE EARTHING DETAILS SHEET 2	B
DSD-830	EARTH BAR DETAILS	B
OSD-831	SINGLE POINT EARTH BAR DETAILS	A
GA13555	GENERAL ARRANGEMENT OF FOUNDATION BOLT AND TEMPLET	
	ASSEMBLY 16 OFF M36 x 1200 LONG BOLTS EQUISPACED ON 950mm PITCH	0
GA16014-F	SITE No. S2711 OPTUS CURL CURL BEACH 22.5m COMMUNICATION POLE	
	FOOTING ADAM STREET RESERVE (JOHN FISHER PARK) CURL CURL NSW 2096	0
GA16014	GENERAL ARRANGEMENT OF 22.5m COMMUNICATION POLE	
	WITH EXTENSION BASE PLATE MOUNTED	0
SC096202	STRUCTURAL ANALYSIS AND DESIGN CERTIFICATE	1
S2711-NSW/S	LENLEASE STRUCTURAL REPORT	1
S2711-L100	URBIS LANDSCAPING PLAN	A

OPTUS

OPTUS SITE - S2711

CURL CURL BEACH

LOT 7356 DP 1167221

ABBOTT ROAD SPORTSGROUND

NORTH CURL CURL, NSW 2096

STAY ALIVE SITE REPLACEMENT 5G

OPTUS WORK AUTHORITY N° 462183



Telecommunications Services
Level 3, Zenith Tower B 821 Pacific Hwy,
Chatswood NSW 2067 Australia
www.lendlease.com

FOR CONSTRUCTION

Drawing No.

S2711 - 01

SITE ADDRESS

LOT 7356 DP 1167221
 ABBOTT ROAD SPORTSGROUND
 NORTH CURL CURL, NSW 2096

OPTUS SITE S2711
 (RFNSA No. 2096009)



TOPOGRAPHIC MAP ... COPYRIGHT © GOOGLE MAPS

SITE LOCATION DATA	
SOURCE: SURVEY/RFNSA	
DATUM: MGA (GDA94)	ZONE: 56
REF LOCATION:	MONOPOLE
EASTING	341 903
NORTHING	6 262 498
LATITUDE	-33.76583°
LONGITUDE	151.29279°
WGS84 DATUM (USED BY GPS DEVICES) CAN BE CONSIDERED SAME AS GDA94 (SOURCE: "GEOCENTRIC DATUM OF AUSTRALIA TECHNICAL MANUAL" VERSION 2.3)	

SITE HAZARDS

- EXISTING EME TRANSMITTING ANTENNAS
- MANUAL HANDLING
- WORKING AT HEIGHTS
- SLIP, TRIP AND FALLS
- ELECTRICAL HAZARDS
- WEATHER / LIGHTNING
- SUN EXPOSURE
- WILDLIFE / INSECTS

CONSTRUCTION SITE ACCESS

- EXISTING ACCESS GATE ON ABBOTT ROAD. THEN FOLLOW DESIGNED ACCESS ROUTE (SHOWN ON G2) TO OPTUS COMPOUND.
- BOG MATS (150mm x 4m x 2.44m EACH) TO BE PLACED ON GROUND (APPROX. 100m TO SITE) FOR TRAFFIC ACCESS DURING OPTUS CONSTRUCTION.

SITE SIGNAGE

- SITE SIGNAGE SHALL BE IN ACCORDANCE WITH OSD-170 (GROUND SITE) AND OSD-191 (EME SIGNAGE).
- MERCS-1 TO BE INSTALLED ON BASE OF MONOPOLE.
- MERCS-2 TO BE INSTALLED ON THE ACCESS GATE.

EME EXCLUSION ZONES

REFER TO EME GUIDE (EMEG) FOR LATEST EME EXCLUSION ZONES FOR EXISTING AND NEW ANTENNAS AT THIS SITE.

ELECTRICAL INSTALLATION

REFER TO SITE POWER DETAILS DRAWINGS S2711-E1 & E2.
 ADDITIONAL SCOPE OF WORK REGARDING COUNCIL FLOODLIGHTS ON S2711-E1, SECTION 9.

SITE EARTHING

REFER TO EARTHING DRAWING S2711-E1 & E3.

NEW OPTUS MONOPOLE STRUCTURE

- NEW OPTUS 22.5m MONOPOLE.
- STRUCTURAL ADEQUACY OF NEW MONOPOLE STRUCTURE AND FOUNDATION HAS BEEN CONFIRMED BY VALMONT. REFER TO VALMONT STRUCTURAL REPORT SC096202REV1, DATED 09/03/2021.
- NEW OPTUS ANTENNAS, RRU'S AND ANCILLARIES TO BE INSTALLED ON NEW TURRET MOUNT AS SHOWN IN VALMONT DRG. GA16014. STRUCTURAL ASSESSMENT OF NEW TURRET AND OTHER SUPPORTING MOUNTS HAS BEEN CERTIFIED BY VALMONT STRUCTURAL REPORT SC096202REV1, DATED 09/03/2021.
- ANTENNA MAINTENANCE ACCESS VIA EWP BY RIGGER QUALIFIED PERSONNEL.

NEW 3 BAY OUTDOOR UNITS

- ICS 3 BAY THERMO CABINET TO BE NEW ON ELEVATED PLATFORM. REFER TO S2711-S1 FOR DETAILS.
- STRUCTURAL ADEQUACY OF OPTUS ELEVATED PLATFORM HAS BEEN CONFIRMED BY LENDLEASE. REFER TO LENDLEASE STRUCTURAL ASSESSMENT SA-S2711.

*Shows foundation details!
 not cabinet or platform details*

TRANSMISSION

THIS SITE SHALL BE LINKED TO THE NETWORK VIA OPTIC FIBRE. REFER TO OPTUS FIBRE PLAN.

		Client:		Project:	MOBILE NETWORK AUSTRALIA SITE No:- S2711 CURL CURL BEACH NEAR 2 IRANDA AVENUE	Drawing Title:	SITE SPECIFICATIONS																		
<table border="1"> <tr> <th>Rev</th> <th>Date</th> <th>Revision Details</th> <th>Consultant</th> <th>CAO</th> <th>Designer</th> <th>Verifier</th> <th>Approver</th> </tr> <tr> <td>A</td> <td>21.03.21</td> <td>ISSUED FOR CONSTRUCTION (STAY ALIVE SITE REPLACEMENT 5G)</td> <td>LENDLEASE</td> <td>JM</td> <td>LC</td> <td>SK</td> <td>SK</td> </tr> </table>		Rev	Date	Revision Details	Consultant	CAO	Designer	Verifier	Approver	A	21.03.21	ISSUED FOR CONSTRUCTION (STAY ALIVE SITE REPLACEMENT 5G)	LENDLEASE	JM	LC	SK	SK			Drawing Status:	FOR CONSTRUCTION	Drawing No.:	S2711-G1	Revision:	A
Rev	Date	Revision Details	Consultant	CAO	Designer	Verifier	Approver																		
A	21.03.21	ISSUED FOR CONSTRUCTION (STAY ALIVE SITE REPLACEMENT 5G)	LENDLEASE	JM	LC	SK	SK																		

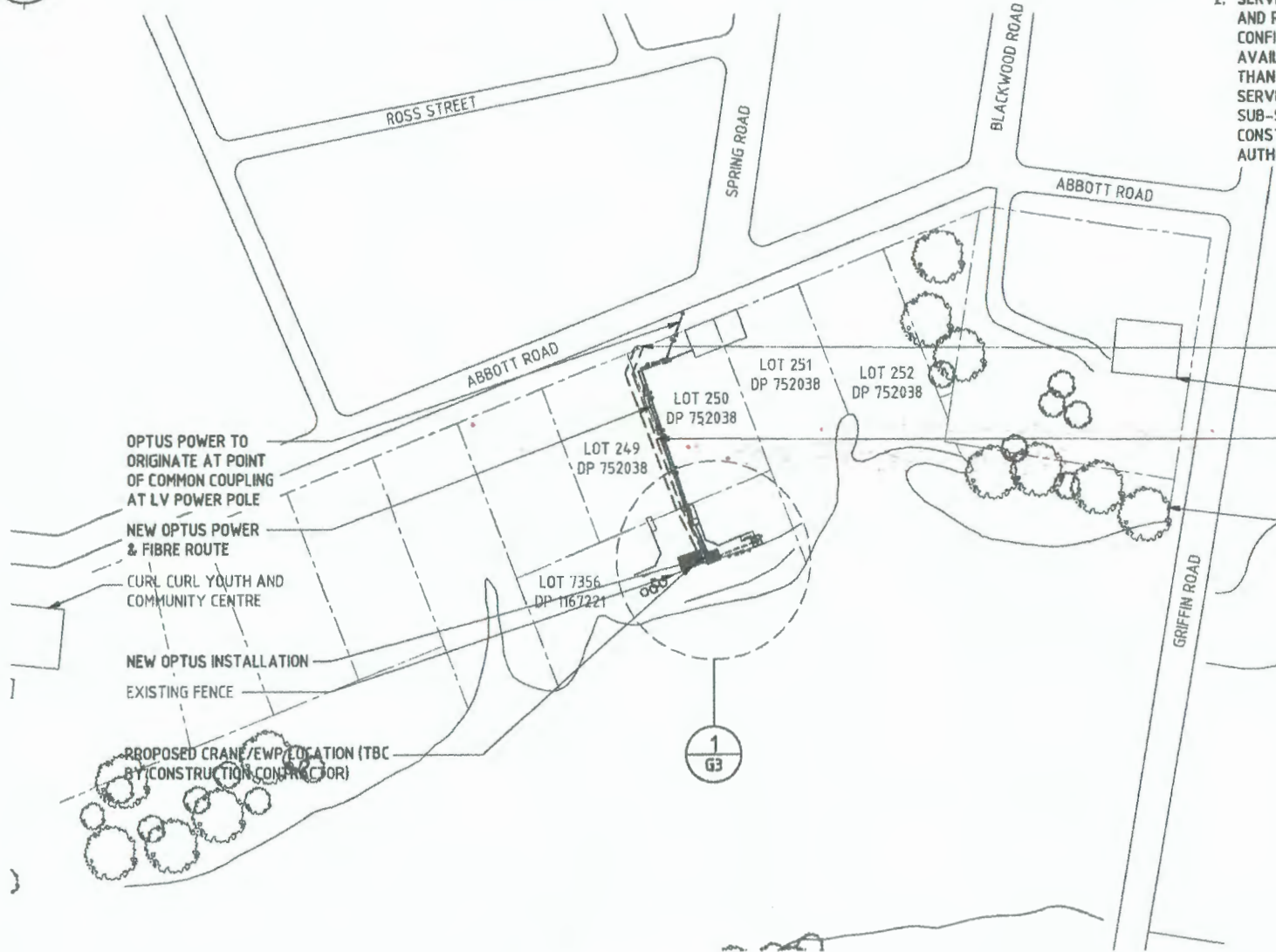


NOTES:

1. ALL INFORMATION TO BE CHECKED ON SITE PRIOR TO FABRICATION AND CONSTRUCTION.
2. SERVICES INFORMATION CONTAINED ON THIS DRAWING IS INDICATIVE ONLY AND REFERENCE SHOULD BE MADE TO THE AUTHORITIES DRAWINGS TO CONFIRM ACCURACY AND COMPLETENESS. WHERE INFORMATION IS AVAILABLE, THE SUB-SURFACE SERVICES INSTALLED BY AGENTS OTHER THAN AUTHORITIES HAVE BEEN SHOWN, BUT ADDITIONAL UNDOCUMENTED SERVICES MAY BE PRESENT. SHOULD THE CONTRACTOR BELIEVE THAT SUB-SURFACE SERVICES ARE AT RISK OF DAMAGE DURING CONSTRUCTION, THE CONTRACTOR SHOULD NOTIFY THE RELEVANT AUTHORITIES AND ESTABLISH THE EXACT LOCATION OF THE SERVICES.

LEGEND

- 0 e — 0 e — EXISTING BOUNDARY
- 0 f e — 0 f e — OPTUS U/G POWER SUPPLY
- 0 f c — 0 f c — OPTUS FIBRE LINK



- INSTALL NEW VEHICLE ACCESS GATE IN EXISTING FENCE
- EXISTING BUILDING (TYP.)
- BOG MATS (150mm x 4.0m x 2.44m EACH) TO BE PLACED ON GROUND (APPROX. 100m TO SITE) FOR TRAFFIC ACCESS DURING OPTUS CONSTRUCTION
- EXISTING TREE (TYP.)

OPTUS POWER TO ORIGINATE AT POINT OF COMMON COUPLING AT LV POWER POLE

NEW OPTUS POWER & FIBRE ROUTE

CURL CURL YOUTH AND COMMUNITY CENTRE

NEW OPTUS INSTALLATION

EXISTING FENCE

PROPOSED CRANE/EWP LOCATION (TBC BY CONSTRUCTION CONTRACTOR)

OVERALL SITE PLAN

SCALE 1:2000

Rev	Date	Revision Details	Consultant	CAD	Designer	Verifier	Approver
A	21.05.21	ISSUED FOR CONSTRUCTION (STAY ALIVE SITE REPLACEMENT SQ)	LENDLEASE	JM	LC	SK	SK



Client: **OPTUS**

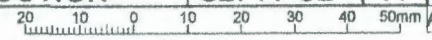
Project: **MOBILE NETWORK AUSTRALIA**
SITE No:- S2711
CURL CURL BEACH
 NEAR 2 IRANDA AVENUE

Drawing Title: **OVERALL SITE PLAN**

Drawing Status: **FOR CONSTRUCTION**

Drawing No: **S2711-G2**

Revision: **A**



CAD File: \\Agaar.lendlease.com\lidda\National Optus Wireless - SYD28\A20_Construction\4_Stayalive\GREENFIELD\S2711_Curl_Curl_beach\Phase 2\Design\2_CAD Folder\2.1 External CAD\Web-SKI\S2711-FC.dwg
 Plot By: Wang, Jie Date: 21.05.21 2:59 PM



NEW OPTUS ACCESS ROUTE BOG MATS TO BE APPLIED ON GROUND FOR HEAVE VEHICLE ACCESS

NEW PRIVATE ELECTRICAL PILLAR TO BE INSTALLED ON PROPERTY BOUNDARY

EXISTING CHAINWIRE FENCE

NEW OPTUS POWER & FIBRE ROUTE

NEW OPTUS 3 x $\phi 100$ uPVC CONDUITS WITH DRAW PITS. REFER TO OSD-570 FOR PIT AND TRENCH DETAILS

NEW CABLE RISER FROM OTC BOTTOM TO GROUND PIT, REFER TO OSD-550 FOR RISER DETAILS

NEW OPTUS 3 BAY OUTDOOR UNIT ON ELEVATED STEEL PLATFORM. REFER TO S2711-S1 TO S5 FOR DETAILS

PART OF WIRE FENCE TO BE REMOVED FOR STEEL PLATFORM INSTALLATION

ADDITIONAL CREEK EMBANKMENT REHABILITATION PLANTING CONTAINING A MIX OF INDIGENOUS TREES, SHRUBS AND GROUND COVERS

NEW OPTUS RRU'S (12 OFF) ON TURRET MOUNT
NEW OPTUS 22.5m HIGH VALMONT SLIMLINE MONOPOLE
NEW OPTUS 10P PANEL ANTENNAS (3 OFF) ON NEW TURRET MOUNTS. REFER TO GA16014 SHEET 2 FOR MOUNT DETAILS

EXISTING MESH FENCE
EXISTING BENCH
EXISTING TIMBER WALL WITH MESH FENCE ON TOP

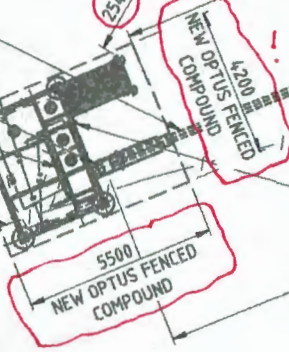
EXISTING LIGHT TOWER AND 300mm FOOTING TO BE REMOVED AS PART OF OPTUS SCOPE

EXISTING WATER TAP
NEW VALMONT FOOTING, REFER TO GA16014-F_Rev0 FOR FURTHER DETAILS

MGA ZONE	56
E	34 1903
N	6 262 498
AT	€ MONOPOLE

NEW 300mm CABLE TRAY FROM PIT TO CABLE ENTRY ON POLE

not clear dimension to proposed fence!



NOTES:

- REFER TO DRAWING S2711-A1 FOR ANTENNA SYSTEM CONFIGURATION.
- REFER TO DRAWING S2711-F1 FOR EQUIPMENT OTC LAYOUT.
- ALL INFORMATION TO BE CHECKED ON SITE PRIOR TO FABRICATION AND CONSTRUCTION.
- FOR MONOPOLE AND FOOTING DETAILS REFER VALMONT DRG. GA16014, GA16014-FN AND GA13555 FOR FURTHER DETAILS, DATED 02/03/2021.
- FOR NEW OPTUS SUPPORTING MOUNTS DETAILS REFER VALMONT DRG. GA16014.
- OPTUS ANCILLARY EQUIPMENT INCLUDING DIPLEXERS, MHA'S AND COMBINERS TO BE INSTALLED TO THE REAR OF THE NEW PANEL ANTENNAS ON THE SAME MOUNT AS PER MANUFACTURERS SPECIFICATIONS.
- NEW 3 OFF 9/18 TRUNK CABLES TO RUN IN NEW U/G CONDUITS (3 OFF. $\phi 100$) THEN VIA NEW 300mm CABLE ENTRY FROM GROUND TO CABLE ENTRY ON THE NEW POLE.
- EXISTING COUNCIL UNDERGROUND SERVICES TO BE LOCATED AND PROTECTED, THESE INCLUDE STORMWATER, IRRIGATION, POTABLE WATER AND POWER TO THE EXISTING LIGHT TOWERS.
- SITE SUBJECT TO THE JOHN FISHER PARK ENVIRONMENTAL MANAGEMENT PLAN. ALL WORKERS TO BE INDUCTED PRIOR TO CONSTRUCTION COMMENCEMENT.
- EXISTING COUNCIL POLE POWER SUPPLY TO BE RE-ROUTED TO THE NEW POLE TO POWER LED LIGHTS.
- ALL EXCAVATED MATERIAL TO BE MANAGED IN ACCORDANCE WITH THE JPP EMP.
- SITE TO BE RESTORED TO PRE-WORK CONDITIONS AT COMPLETION OF WORKS.

** NOTE CONFIGURATION OF EQUIPMENT PLATFORM DOES NOT MATCH CONDITION TO APPROVAL DWG S2711-P2 REV 01*

DETAIL SCALE 1:150 1
G2

ANTENNA LEGEND



LEGEND

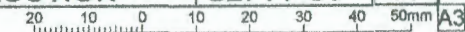


Rev	Date	Revised Details	Consultant	CAD	Designer	Verifier	Approver
A	21.03.21	ISSUED FOR CONSTRUCTION (STAY ALIVE SITE REPLACEMENT) SGI	LENDLEASE	JH	LC	SK	SK



Client: **OPTUS**
Project: **MOBILE NETWORK AUSTRALIA**
SITE No:- S2711
CURL CURL BEACH
NEAR 2 IRANDA AVENUE

Drawing Title: **SITE LAYOUT AND SETOUT PLAN**
Drawing Status: **FOR CONSTRUCTION**
Drawing No: **S2711-G3**
Revision: **A**

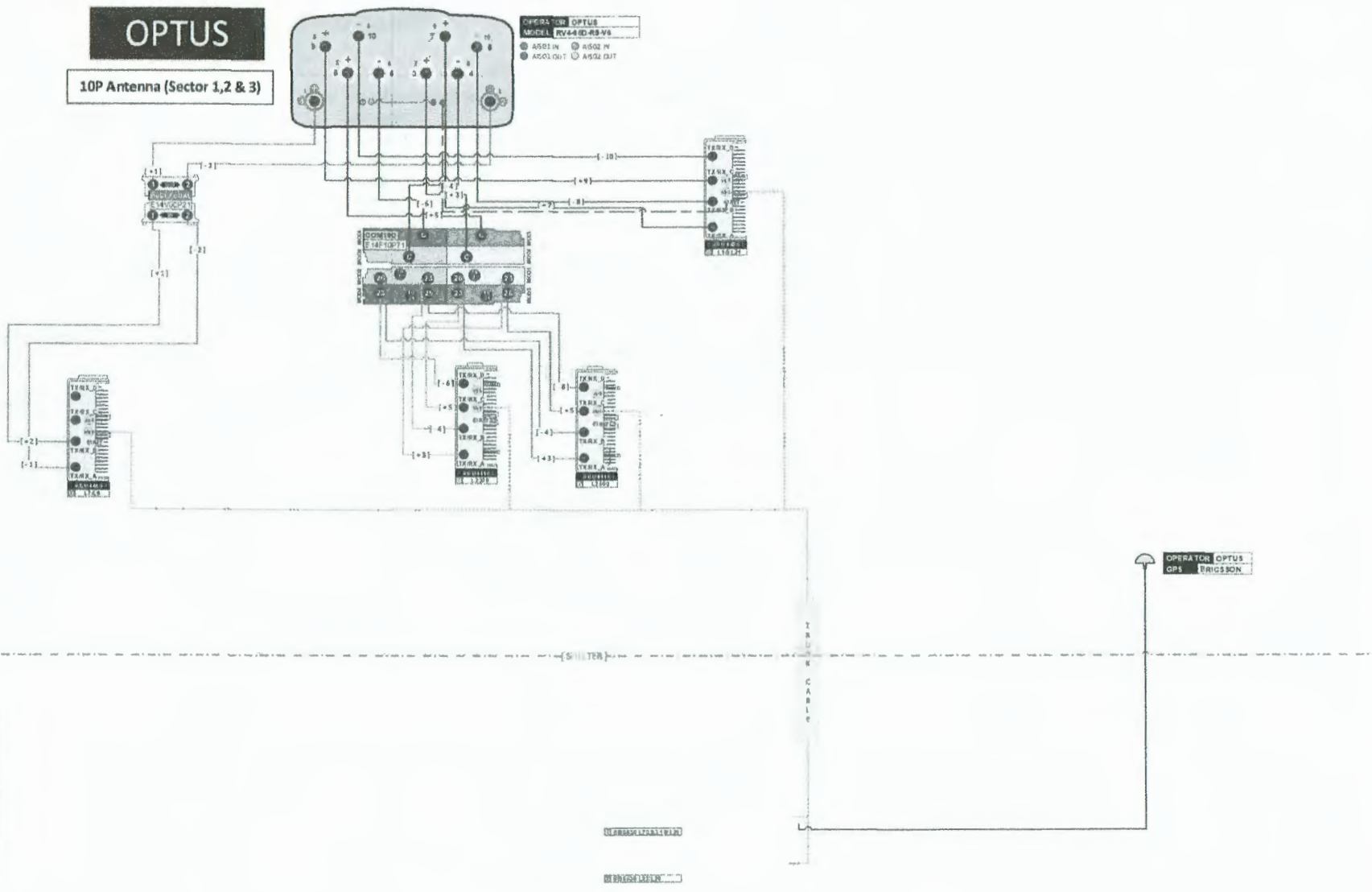


CAD File: \\Apac.lendlease.com\l\data\Marlomat Optus Wireless - SYD287\28. Construction\4. Stayalive\GREENFIELD\S2711_Curl Curl Beach\Phase 2\Design\2. CA0 Folder\22. Internal CAD (do not send)\S2711-FC.dwg
Plot By: Wang, Jie Date: 07.06.21 1:18 PM

OPTUS

10P Antenna (Sector 1,2 & 3)

OPERATOR OPTUS
 MODEL RV44-ED-89-V6
 AS01 IN AS02 IN
 AS03 OUT AS04 OUT



4G Vendor: Ericsson
 Planned Turn: 7/19/13, A.21, A.23, L25
 Airwidth: 4200/300
 MDT: 40/20
 EDT for low band: 2/1/2
 EDT for high band: 2/2/2
 4G Antenna Height: 23.9/23.9/23.9
 No future reservation as DA has already been launched

RF PLUMBING DIAGRAM
 PER SECTOR

NOTE:
 1. THIS DRAWING SHALL BE READ IN CONJUNCTION WITH DRAWING S2711-A1.

Rev	Date	Revision Details	Consultant	CAD	Designer	Verifier	Approver
A	21/05/21	ISSUED FOR CONSTRUCTION (STAY ALIVE SITE REPLACEMENT)	LENDLEASE	JM	LC	SK	SK



OPTUS

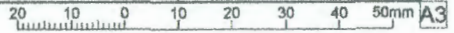
Client:
MOBILE NETWORK AUSTRALIA
 SITE No:- S2711
 CURL CURL BEACH
 NEAR 2 IRANDA AVENUE

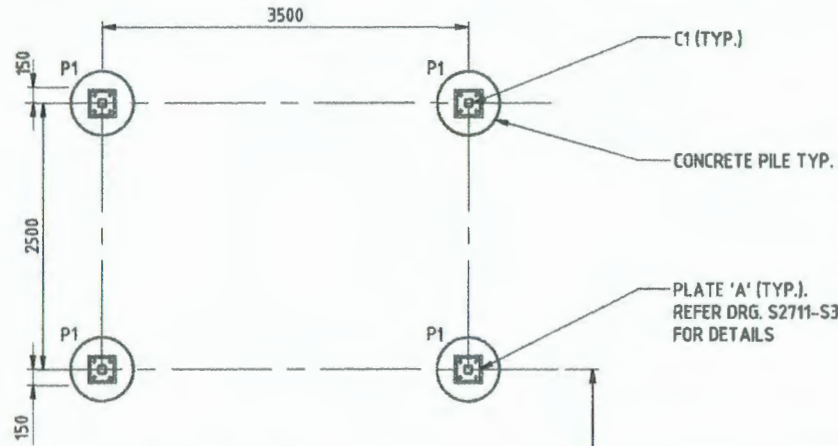
Drawing Title:
OPTUS RF PLUMBING DIAGRAM

Drawing Status: **FOR CONSTRUCTION**

Drawing No. **S2711-A2**

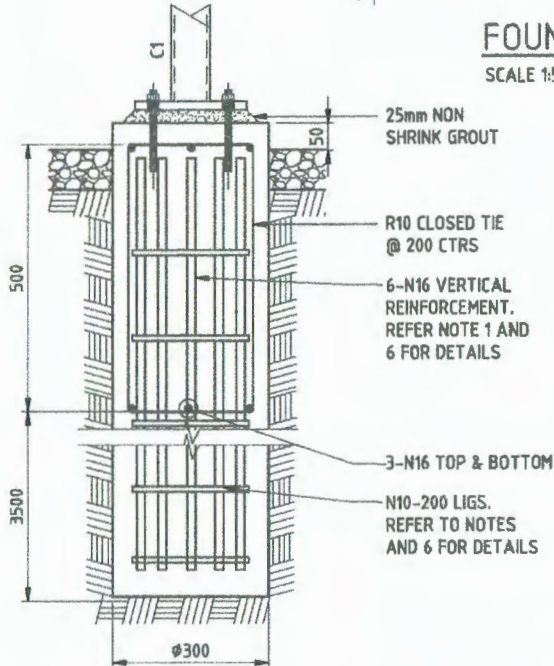
Revision: **A**





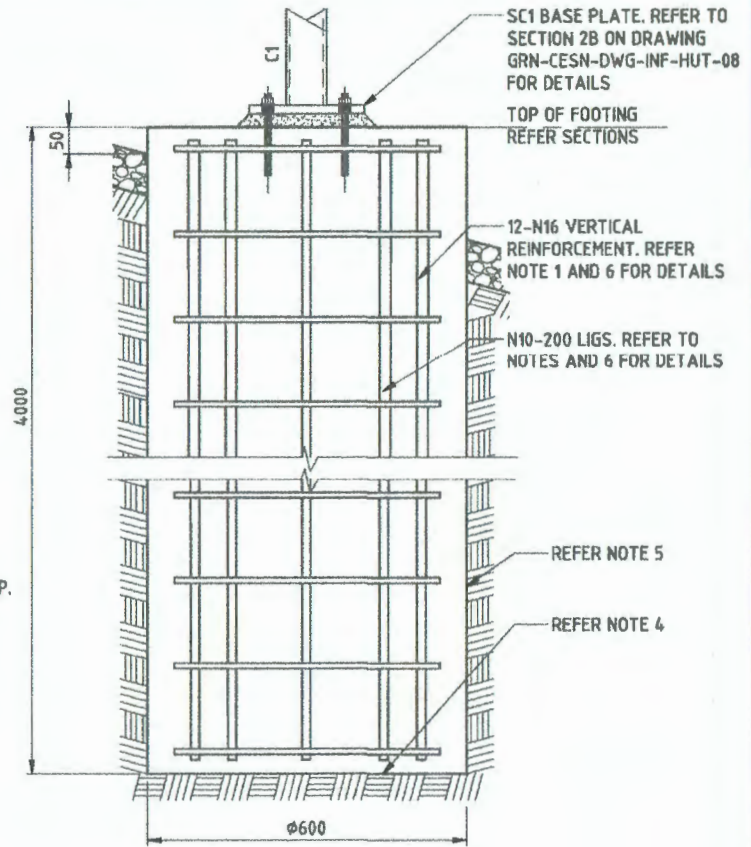
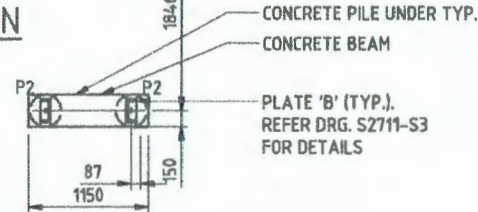
FOUNDATION PLAN

SCALE 1:50



BORED PIER P2 DETAIL

SCALE: 1:10



BORED PIER P1 DETAIL

SCALE: 1:10

INSITU BORED CONCRETE PILES:

1. FOR SOIL PROPERTIES REFER TO GEOTECHNICAL REPORT REV.3 PREPARED BY INTRAX DATED 29/04/2021.
2. ALL WORKMANSHIP AND MATERIALS SHALL BE IN ACCORDANCE WITH AS2159 PILING DESIGN & INSTALLATION CURRENT EDITIONS WITH AMENDMENTS, EXCEPT WHERE VARIED BY CONTRACT DOCUMENTS.
3. PIERS SHALL BE POURED WITHIN 24 HOURS OF EXCAVATION UNLESS OTHERWISE AGREED.
4. PIER WALL SHALL BE MAINTAINED STABLE PRIOR TO POURING CONCRETE.
5. PIER BASES SHALL BE LEVEL AND FREE OF ALL LOOSE MATERIAL.
6. REMOVE ALL FREE WATER FROM PIERS BEFORE POURING.

NOTES:

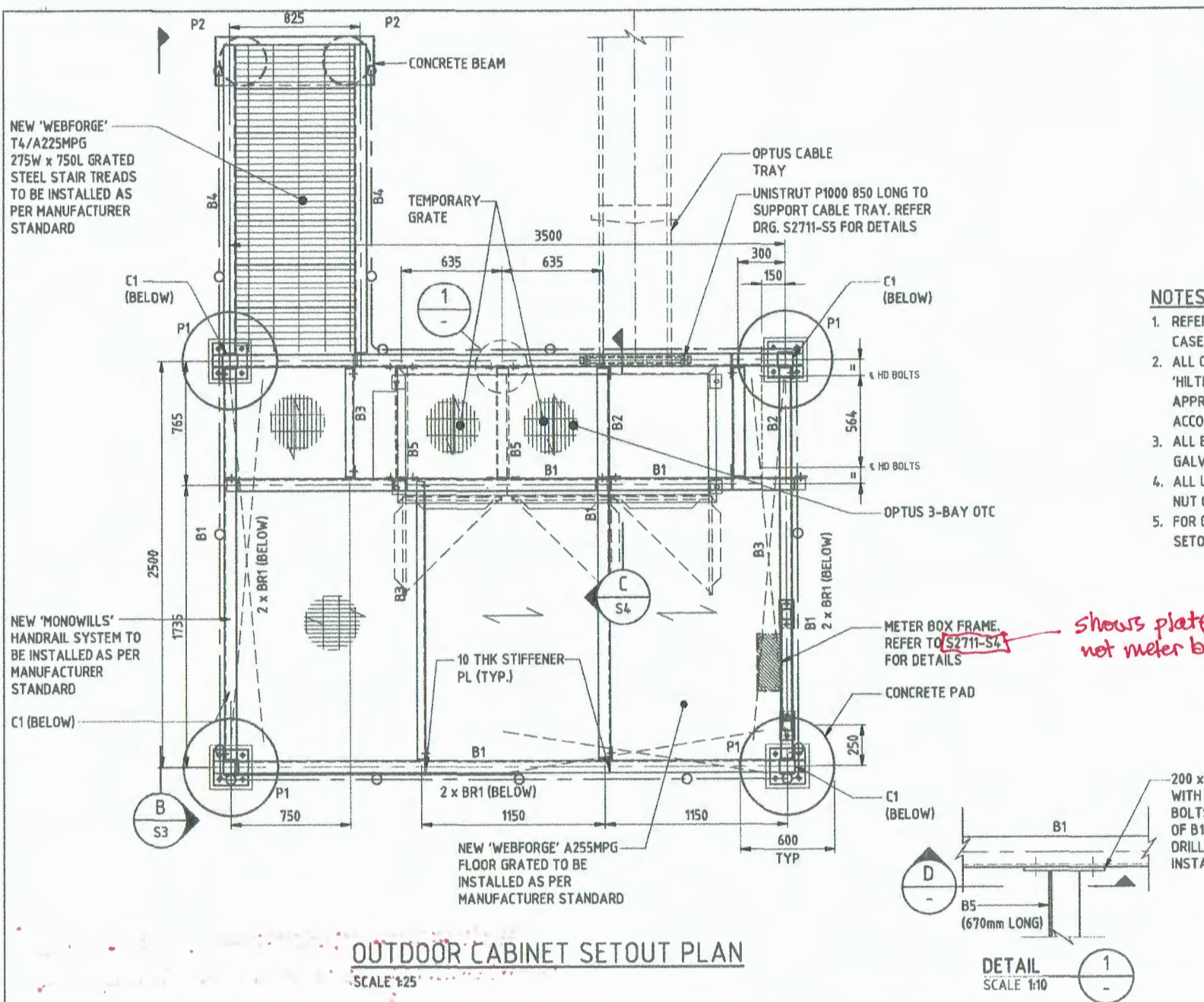
1. FOR STANDARD CONCRETE NOTES REFER TO DRG OSD-100.
2. SAFE WORKING PRACTICES SHALL BE CARRIED OUT IN ACCORDANCE WITH AS2159 AND LOCAL STATUTORY AUTHORITY REGULATIONS.
3. PRIOR TO COMMENCEMENT OF ANY EXCAVATION, CONTRACTOR SHALL VERIFY THAT THE LOCATION IS CLEAR OF ALL UNDERGROUND SERVICES.
4. FOUNDATIONS SHALL BE PROVIDED WITH A CLEAN BEARING ON ROCK, GOOD NATURAL GROUND OR APPROVED FILL WITH AN ALLOWABLE BEARING PRESSURE OF NO LESS THAN 80kPa.
5. THE BASE OF EXCAVATION SHALL BE CLEAN OF LOOSE MATERIAL AND DEBRIS.
6. WHERE NECESSARY, THE CONTRACTOR SHALL PROVIDE SHORING TO THE SIDES OF THE EXCAVATION TO MAINTAIN IT IN A STABLE CONDITION AT ALL TIMES.
7. CONCRETE STRENGTH OF $f'_{c}=32\text{MPa}$. CLEAR CONCRETE COVER TO REINFORCEMENT FROM ALL FACES 50mm.
8. CONCRETE SHALL BE VIBRATED THOROUGHLY TO ELIMINATE SEGREGATION.
9. ALL CONCRETE WORK SHALL BE IN ACCORDANCE WITH AS3600.

Rev	Date	Revision Details	Consultant	CAD	Designer	Verifier	Approver
A	21.05.21	ISSUED FOR CONSTRUCTION (STAY ALIVE SITE REPLACEMENT 59)	LENDLEASE	JH	LC	SK	SK



Client: MOBILE NETWORK AUSTRALIA
 Project: SITE No:- S2711
 CURL CURL BEACH
 NEAR 2 IRANDA AVENUE

Drawing Title: OTC STEEL PLATFORM FOUNDATION DETAILS
 Drawing Status: FOR CONSTRUCTION
 Drawing No.: S2711-S1
 Revision: A



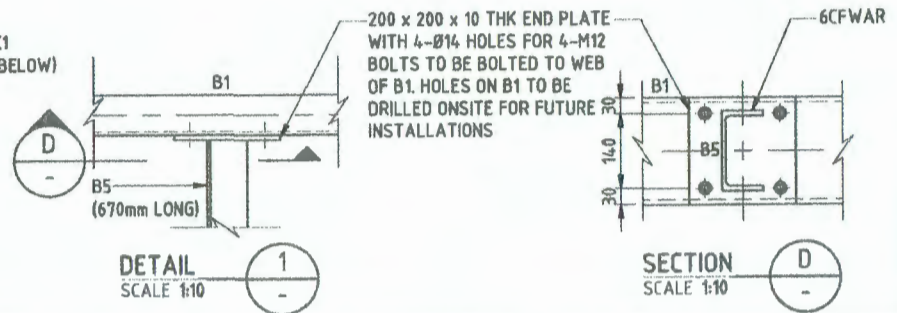
STEEL MEMBER SCHEDULE		
MARK	MEMBER SIZE	REMARKS
C1	100 x 5 SHS	STUB COLUMN
B1	200 PFC	BEAM
B2	150 PFC	SUPPORT BEAM
B3	100 PFC	SUPPORT BEAM
B4	200 PFC	STAIR BEAM
B5	150 PFC	FUTURE BEAM*
BR1	75 x 6 EA	DIAGONAL BRACE GRADE 300 PLUS

* FOR CONNECTION DETAILS REFER DETAIL 1

NOTES:

1. REFER DRGS OSD-100 FOR STEEL AND FABRICATION NOTES. IN CASE OF DISCREPANCY THE FOLLOWING NOTES WILL PREVAIL.
2. ALL CHEMICAL ANCHORS FOR FIXINGS TO CONCRETE SHALL BE 'HILT' WITH SPECIFIED ADHESIVE AND HAS-E-R ROD, OR APPROVED SIMILAR, AND SHALL BE INSTALLED STRICTLY IN ACCORDANCE WITH THE MANUFACTURER'S SPECIFICATIONS.
3. ALL BOLTS & FASTENER COMPONENTS SHALL HAVE HOT-DIP GALVANISED FINISH.
4. ALL U-BOLTS & BOLTS SHALL BE SUPPLIED WITH FLAT, SPRING & NUT OR DOUBLE NUTS.
5. FOR ODU, CABLE TRAY AND WATERFALL CABLE LADDER POST SETOUT AND LOCATION REFER DRG. S2711-G3.

*Shows platform details!
not meter box frame*



OUTDOOR CABINET SETOUT PLAN
SCALE 1:25

DETAIL 1
SCALE 1:10

SECTION D
SCALE 1:10

Rev	Date	Revision Details	Consultant	CAD	Designer	Verify	Approver
A	21.05.21	ISSUED FOR CONSTRUCTION (STAY ALIVE SITE REPLACEMENT)	LENLEASH	JM	LC	SK	SK



Client: **OPTUS**
Project: **MOBILE NETWORK AUSTRALIA**
SITE No:- S2711
CURL CURL BEACH
NEAR 2 IRANDA AVENUE

Drawing Title: **OTC STEEL PLATFORM SETOUT PLAN**
Drawing Status: **FOR CONSTRUCTION**
Drawing No: **S2711-S2**
Revision: **A**

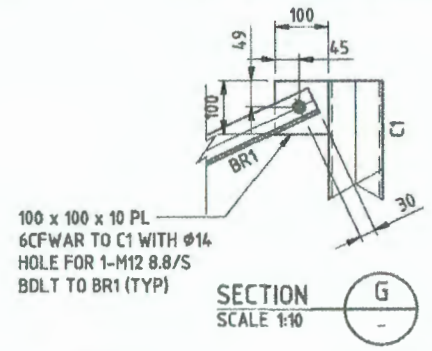
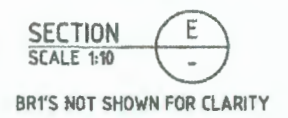
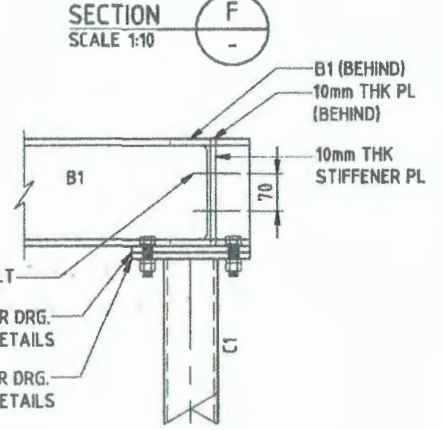
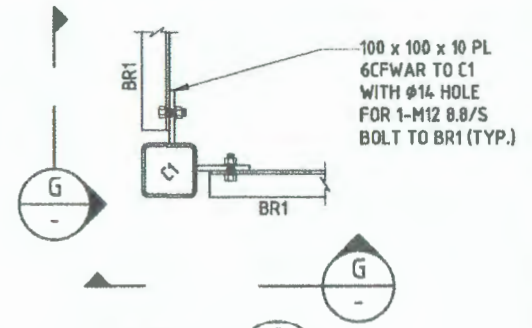
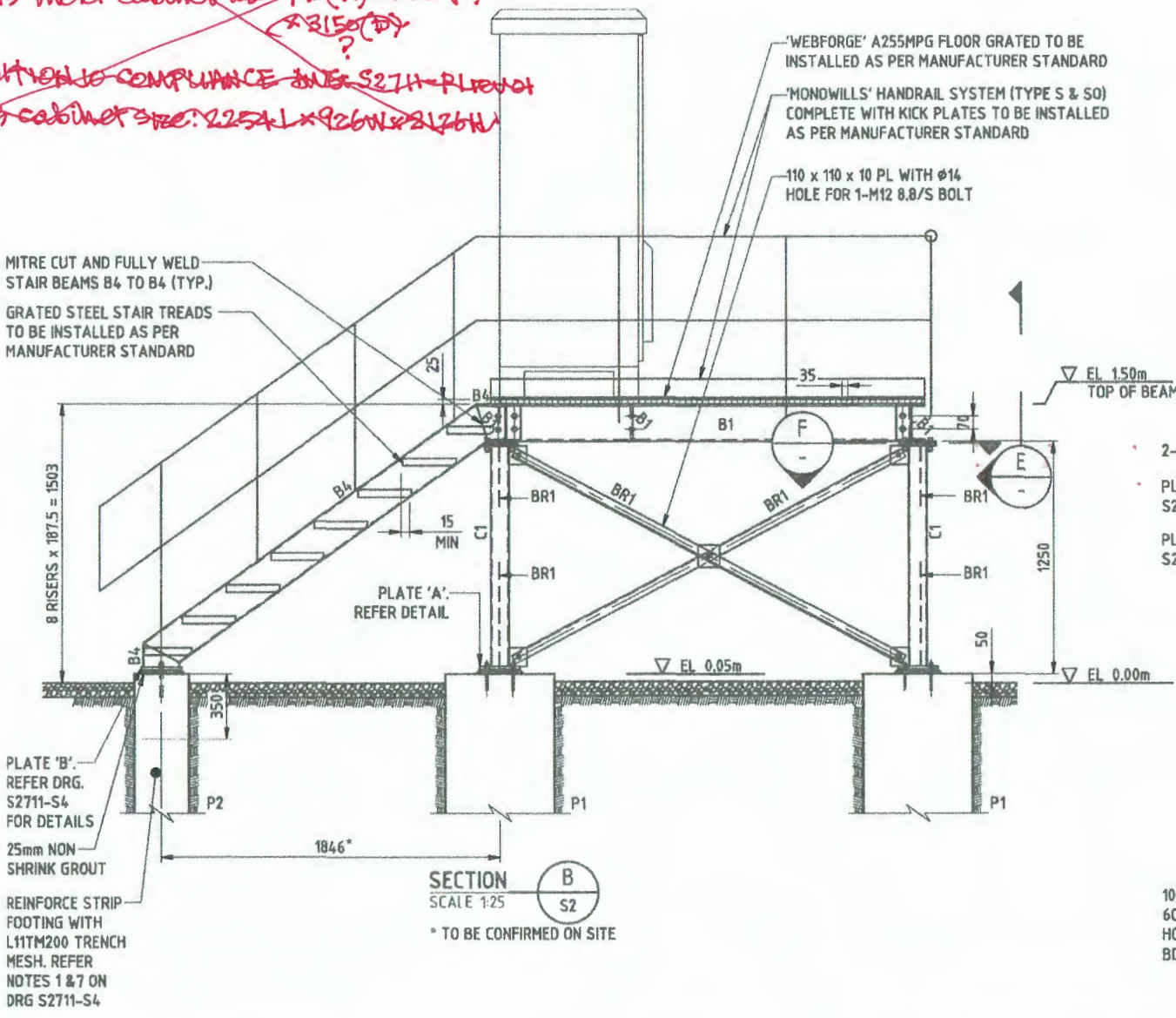
~~METER CABINET DIMENSIONS AMBIGUOUS~~

~~GHD report 5 Aug 2017 [unloaded CE Docs of 1/11/2017]~~

~~Shows meter cabinets at 2940(H) x 2380(W) x 3150(D)~~

~~CONDITIONS COMPLIANCE WITH S2711-PL1 AND 1~~

~~Shows cabinet size: 2254L x 926W x 2126H~~



Rev	Date	Revision	Drawn	Checked	Designed	Approved
A	21.05.21	ISSUED FOR CONSTRUCTION (STAY ALIVE SITE REPLACEMENT S&P)	LENDLEASE	JM	LC	SK
			Consultant	CAD	Designer	Approver



Client: **OPTUS**

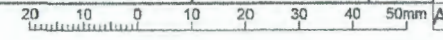
Project: **MOBILE NETWORK AUSTRALIA**
 SITE No:- S2711
 CURL CURL BEACH
 NEAR 2 IRANDA AVENUE

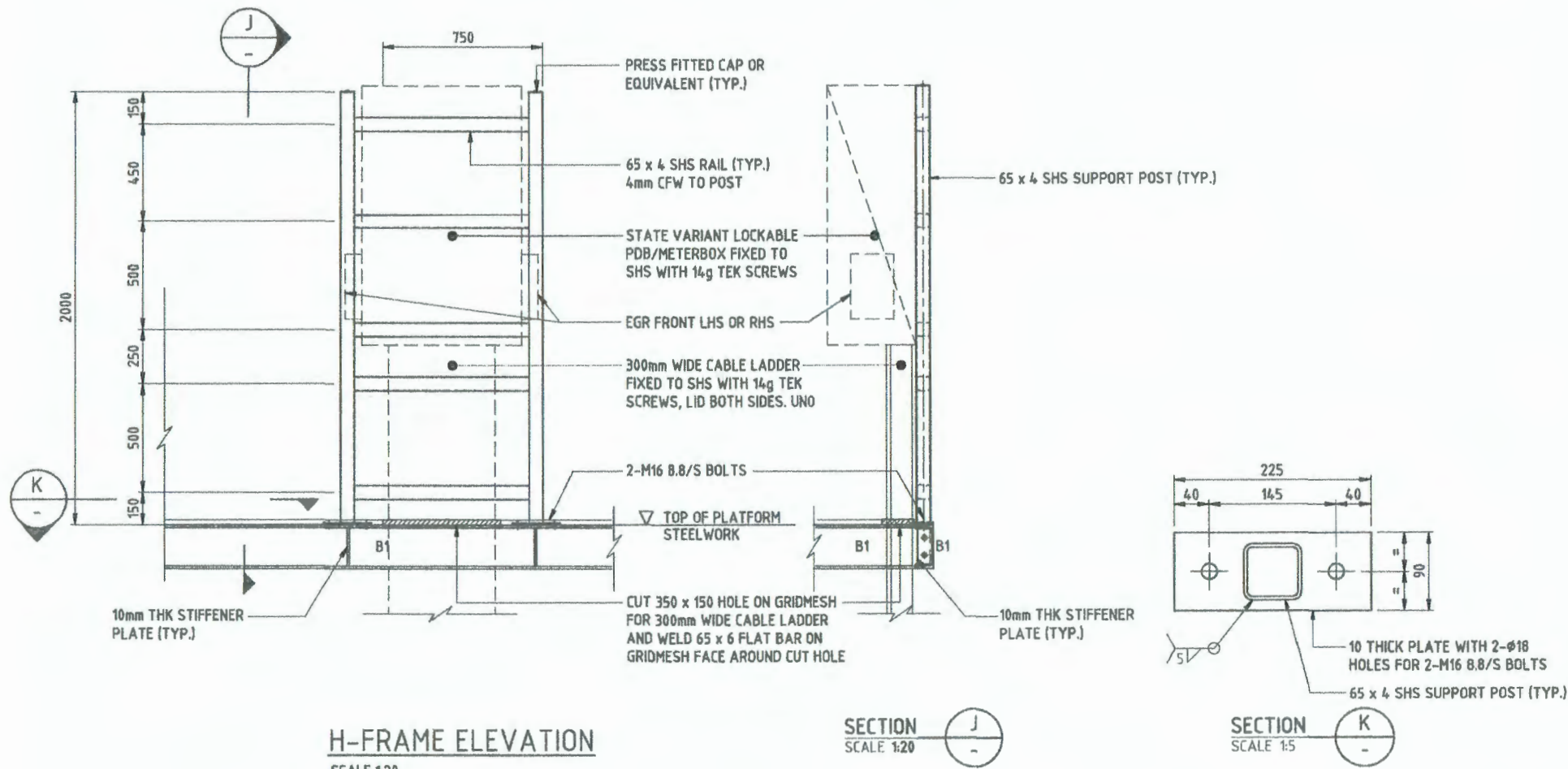
Drawing Title: **OTC STEEL PLATFORM DETAILS SHEET 1 OF 2**

Drawing Status: **FOR CONSTRUCTION**

Drawing No.: **S2711-S3**

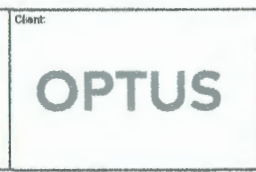
Revision: **A**





- NOTES:**
- FOR CONSTRUCTION & STEEL WORK NOTES, REFER DRG OSD-100.
 - ALL COMPONENTS SHALL HAVE HOT-DIP GALVANISED FINISH.

Rev	Date	Drawn/Rev Details	Consultant	CAD	Designer	Verifier	Approver
A	21.05.21	ISSUED FOR CONSTRUCTION (STAY ALIVE SITE REPLACEMENT SG)	LENDLEASE	JM	LC	SK	SK



Client: **OPTUS**

Project: **MOBILE NETWORK AUSTRALIA**
SITE No:- S2711
CURL CURL BEACH
 NEAR 2 IRANDA AVENUE

Drawing Title: **METER BOX H-FRAME DETAILS**

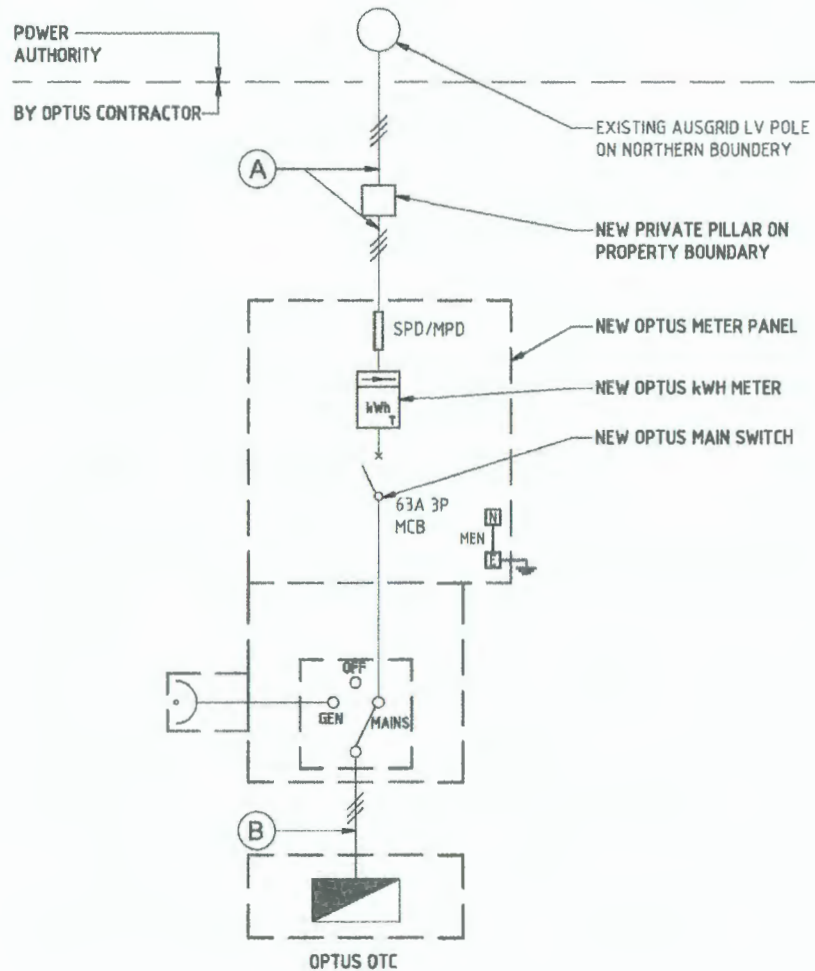
Drawing Status: **FOR CONSTRUCTION**

Drawing No.: **S2711-S5**

Revision: **A**

CABLE SCHEDULE

CABLE	CABLE TYPE	CORES	ACTIVE	NEUTRAL	EARTH	CABLE LENGTH	INSTALLATION METHOD	COMMENTS
(A)	XLPE/PVC	1 x 4C Cu	35mm ²	35mm ²	-	170m	U/G IN 63mm DIA uPVC ORANGE HD CONDUIT	BY OPTUS CONTRACTOR
(B)	XLPE/PVC	4C + E	35mm ²	35mm ²	-	10m	SURFACE MOUNTED IN 63mm DIA FLEXIBLE UV RESISTANT CONDUIT	BY OPTUS CONTRACTOR



LEGEND

SPD/MPD SERVICE/METER PROTECTION DEVICE
 N NEUTRAL
 E EARTH
 MEN MULTIPLE EARTHED NEUTRAL
 SPD SURGE PROTECTION DEVICE



METER



CIRCUIT BREAKER



ISOLATOR SWITCH



DISTRIBUTION BOARD



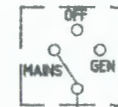
EARTH CONNECTION



FUSE



Denotes number of phases



MANUAL CHANGEOVER SWITCH



GENERATOR SOCKET INLET



EARTH BAR/NEUTRAL BAR



NEUTRAL CONDUCTOR



PROTECTIVE EARTH CONDUCTOR



TRANSFORMER

SINGLE LINE DIAGRAM

NTS

NOTES:

- THIS DRAWING TO BE READ IN CONJUNCTION WITH S2711-E1.
- CABLE LENGTH GIVEN ARE INDICATIVE ONLY. EXACT CABLE ROUTES AND LENGTHS SHALL BE CONFIRMED ON SITE PRIOR TO CONSTRUCTION.
- ADDITIONAL SCOPE OF WORK FOR COUNCIL FLOODLIGHTS ON S2711-E1, SECTION 9.

Rev	Date	Revision Details	Consultant	CAD	Designer	Verifier	Approver
A	21.05.21	ISSUED FOR CONSTRUCTION (STAY ALIVE SITE REPLACEMENT 50)	LEN/LEAS	JM	LC	SK	SK



Project: MOBILE NETWORK AUSTRALIA
 SITE No:- S2711
 CURL CURL BEACH
 NEAR 2 IRANDA AVENUE

Drawing Title: SINGLE LINE DIAGRAM		
Drawing Status: FOR CONSTRUCTION	Drawing No. S2711-E2	Revision A

