

## Did you know?

The dune at the lagoon's exit to the sea is called a foredune and grows and shrinks according to weather conditions. Sea swell and wind deposit sand onto the dune, building it up; and carry it back out to sea forming underwater banks.

The ebb and flow of sand is stabilised to some degree by vegetation that can be protected by keeping off it – this goes for dogs and humans!

## Come say hello!

Visit us at [Facebook.com/CurlCurlLagoonFriends](https://www.facebook.com/CurlCurlLagoonFriends).

Bush regeneration 1<sup>st</sup> & 3<sup>rd</sup> Saturdays each month, 9 -11am, Alan Newtown Reserve. Escape the everyday grind and do your bit to restore native bushland while meeting like-minded locals and learning new skills.

## Your part in reducing waste pollution

We're thrilled that a second series of the influential **War on Waste** TV show is returning in July. It's opening minds, changing behaviour and making our local environment a safer place. Catch it live or on ABC iView.

**Return and earn** by collecting and trading in recyclable bottles. Keep them out of our waterways and get cash for trash. See [returnandearn.org.au](http://returnandearn.org.au) for location details

Consider picking up rubbish while walking/jogging in the park. The "plogging" craze could do wonders in JFP!

***This newsletter is printed on 100% recycled Australian paper***



June 2018

## Could there be a community space in Stirgess Reserve?

Curl Curl Lagoon Friends Committee has a vision to enhance Stirgess Reserve passive recreation area with further native planting. We'd love to create more shade, showcase local plant species and provide a beautiful space in John Fisher Park.

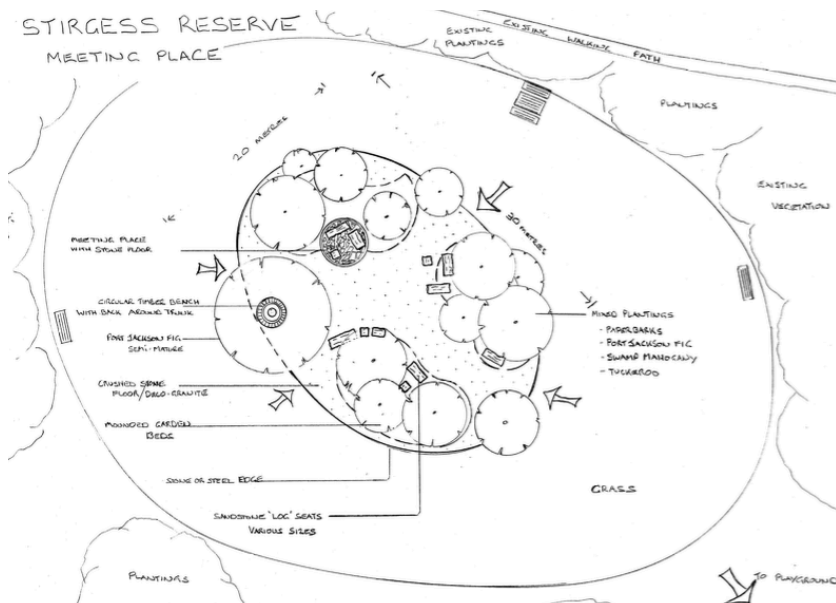
We met with Northern Beaches Council Mayor and Council staff on site earlier this year to discuss our concept for a nature-based community space. The idea is to:

- Create a shady, green space in a time of climate change,
- Make room for locals to get together for picnics, learning experiences or relaxation, and
- Allow area for sporting warm-ups and drills.

Win-win-win in our view! *See over the page for concept.*

The concept incorporates quiet space away from the playgrounds in a picturesque part of the park, with seating, flowing pathways and endemic plant species.

Next steps are for council to draft a design for community consultation. Stay posted for more info to have your say.



## Pride in our Place – no ads on screens

CCLF and many of its members made submissions in April opposing the Development Application for a large electronic scoreboard proposed for Weldon Oval.

We're sport lovers, but draw the line at installing large structures capable of displaying advertising, blocking views in John Fisher Park and setting a precedent for more.

In keeping with the plan of management for the park, we instead proposed use of a mobile scoreboard that would be great during a cricket or AFL game and be safe from vandalism when stored off the field.

## Optus Tower – down but not out

While officially rejected, the quest for a mobile phone tower in JFP is not yet over. CCLF has been advised that Optus will likely appeal or make another submission to install a tower in the park this year. We urge locals to stay vigilant and vocal over this issue.

## Save the Date - AGM

This year's calendar highlight, CCLF's Annual General Meeting will be held on **Wednesday, 24th October**. Put the date in your diary and keep an eye out for our flyer closer to the date.

## What's that Bird?

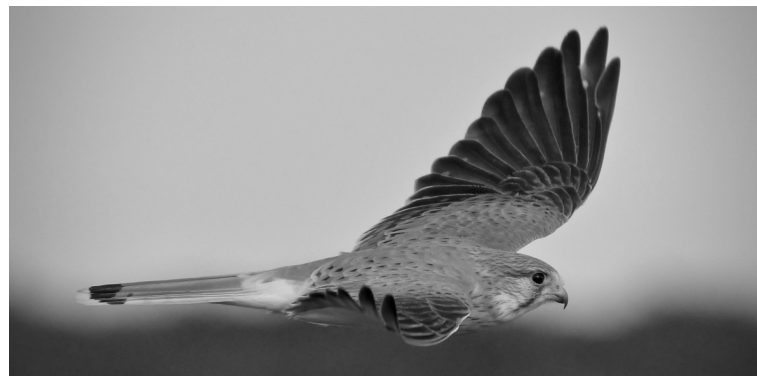


Photo courtesy of: birdsaspoetry

A Kestrel? Yes, good start. Nankeen Kestrel? Even better.

We're lucky enough to have raptors in our neighbourhood that help keep rodent populations in check. This vigilant falcon can be seen regularly on the football fields between Abbott Rd and the lagoon, often perching on the football goalposts or on the light towers, and then swooping down to the ground to pick up prey.

CCLF partners with Northern Beaches Council's Natural Environment unit to count birds as part of a two-year survey underway to better understand our local avian population.

Join us at the wooden bridge at **7:30am on the fourth Friday of each month**; binoculars and bird identification info supplied if you don't have any. We'll be happy to see you!